

Chemgene MEDLAB.

MULTI-SURFACE DISINFECTANT

Chemgene MEDLAB multi-surface disinfectant delivers a new, unique formulation. The combination of active substances in Chemgene MEDLAB ensure that equipment and instruments can be routinely cleaned and disinfected to a consistently high standard, with less risk of antimicrobial resistance.

Chemgene MEDLAB is suitable for the cleaning and disinfection of a variety of surfaces, instruments and equipment in laboratory, medical and forensic settings, against bacteria, yeast, fungi, enveloped viruses, adenovirus, norovirus and bacteriophage.

PRODUCT FEATURES

- Non-corrosive
- Biodegradable ingredients
- Alcohol & chlorine free
- No rinsing required
- 2-year shelf life
- Made in UK
- Complies with BPR, CLP and REACH

Passionate for science.



CONCENTRATE

- Economical dilution rates
- Diluted solution effective for 3 months
- Recycled & recyclable packaging



WIPES

- Quick and convenient disinfection
- Each wipe disinfects 1m²
- Wipes are plastic-free & biodegradable

EXCEPTIONAL ANTIMICROBIAL ACTIVITY!

- Bacteria
- Yeast
- Fungi
- Enveloped viruses
- Adenovirus & Norovirus
- Bacteriophage
- Denatures RNA/DNA



NEW!

READY TO USE SPRAY

- Effective from 60 seconds
- Convenient, reliable pre-diluted formula
- Recycled & recyclable packaging



ORDERING INFORMATION

	CONCENTRATE			READY TO USE SPRAY		WIPES	ACCESSORIES	
Description	1 Litre Self-Dosing Container Chemgene MEDLAB Multi Surface Disinfectant Clear, Unfragranced 100 %	5 Litre Pump Container Chemgene MEDLAB Multi Surface Disinfectant Clear, Unfragranced 100 %	5 Litre Pump Container Chemgene MEDLAB Multi Surface Disinfectant Blue, Eucalyptus 100 %	750ml Ready to Use Spray Chemgene MEDLAB Multi Surface Disinfectant Clear, Unfragranced 10 %	750ml Ready to Use Spray Chemgene MEDLAB Multi Surface Disinfectant Blue, Eucalyptus 10 %	96-Wipe Resealable Flow Wrap Chemgene MEDLAB Multi Surface Disinfectant 10 %	Pump for use with 5 Litre Containers 10 ml dosage	1 litre Empty, Reusable Trigger Spray Bottle Made from 100 % recycled HDPE For compliant storage of diluted disinfectant
Article No.	SKU074A	SKU075A	SKU077A	SKU093A	SKU095A	SKU101A	TR021	SKU084A
Pack Size	6 x 1 Litre	2 x 5 Litres	2 x 5 Litres	6 x 750 ml	6 x 750 ml	6 x 96-Wipe Flow Wraps	1 x Pump	5 x Bottles
List Price	£105.00	£99.00	£99.00	£42.00	£42.00	£82.00	£10.20	£47.00

List prices valid until 31.12.2024.

starlab.click/disinfectant

	TECHNICAL DATA		
	CONCENTRATE	READY TO USE SPRAY	WIPES
Volume / Size	1 L or 5 L	750 ml	200 mm x 180 mm (45 gsm)
Shelf life	2 years, at optimal storage conditions. Diluted concentrate is effective for 3 months.	2 years, at optimal storage conditions.	
Storage conditions	Store at ambient temperature in a closed container. Protect from frost. Protect from heat. Keep away from oxidising substances. Incompatibility with other materials: oxidising substances, anionics, peroxides, acids.		
pH	100%: 10.50 – 11.40 1% & 2%: 9.00 – 10.00 10%: 9.50 – 11.00 20%: 10.50 – 11.40	10.00 – 11.00	9.00 – 10.00
Application areas	Disinfectants and algacides. Not intended for direct application to humans or animals. Not to be used on medical devices. Remove excess soiling prior to disinfection.		
Material compatibility	Suitable for the cleaning and disinfection of an array of hard surfaces, instruments and equipment. Material compatibility testing has been carried out on the following materials up to 20% dilution: stainless steel, mild steel, copper, nylon, acetal and rubber; aluminium at 10 %, and; polyurethane substrate, wool carpets & rugs at 2 % dilution.		
Disposal method	Concentrate must be diluted first. Once diluted (maximum 10%), Chemgene MEDLAB can be disposed of to drains and flushed with as much clean water as practical. This statements refers to unused product only. For used product, disposal must be in accordance with either national regulations or your institution's own guidelines on disposal of hazardous waste.		Dispose of used wipes in general waste or clinical waste as appropriate. Wipes are biodegradable within 3 months.
Sustainability attributes	5 L container: HDPE (35 % PCR). 5 L cap: HDPE. 1 L container: HDPE (50 % PCR). 1 L cap: PP (50% PCR). Shipper box: 100 % recycled cardboard. All packaging is recyclable. Made in UK.	Bottle: HDPE (35 % PCR). Trigger: PP (with PE dip tube). Shipper box: 100 % recycled cardboard. All packaging is recyclable. Made in UK.	Wipes made from a plastic-free plant-based substrate that is 100% biodegradable within 3 months. Shipper box: 100 % recycled cardboard. Made in UK.

PCR = Post consumer recycle.

**EXCEPTIONAL
ANTIMICROBIAL
ACTIVITY!**

CLEANING & DISINFECTION TO CONSISTENTLY HIGH STANDARDS

SUITABLE APPLICATIONS

- Benches and worksurfaces
- Fume hoods
- Biosafety cabinets
- Incubators and refrigerators
- Autoclaves
- Water baths (always rinse with clean water before refilling)
- Pipettes and pipette tips
- Cell cultures
- Discard jars
- Glassware
- Instruments and equipment eg. balances, mixers, shakers
- Computer equipment
- Sample containers
- Storage bins
- Waste disposal bins/areas
- Sinks and taps
- Door handles
- Light switches
- Walls
- Floors

USE IN THE LABORATORY

Protection from pathogenic microorganisms

Carry out your daily tasks safe in the knowledge that you are protected from the risk of infection, even in the presence of organic spills. Use for the cleaning and disinfection of surfaces, instruments and lab equipment, including benches, shelves, fridges, water baths, centrifuges, incubators, discard jars, pipettes and non-medical devices.

USE IN HEALTHCARE SETTINGS

Protection from multi-drug resistant pathogens

Effective infection prevention and control in the healthcare environment for cleaning and disinfection to consistently high standards. Use for the cleaning and disinfection of walls, floors, surfaces, furniture, frequent touch-points and non-critical equipment.

FORENSIC USE

Protection from cross-contamination

Protect against the risk of infection and prevent cross-contamination of DNA between crime scenes. Effective in denaturing DNA & RNA on a wide range of equipment including nitrile gloves, aluminium stepping plates, drying cabinets and disrobing tents, providing exceptional efficacy against relevant human health pathogens both in and outside the lab.

CONCENTRATE

Directions for use: Refer to the Safety Data Sheet before use. Remove excess soiling prior to disinfection. Prepare the concentration of disinfectant solution according to the dilution table:



DILUTION CHART

Effective against	Dilution	Contact time
Bactericidal. Incl. ESKAPE organisms, Moraxella, Streptococcus pyrogenes, E.coli	1 %	5 mins
Bactericidal. Legionella	1 %	10 mins
Bacteriophages	1 %	5 mins
Yeasticidal. Incl. Candida alicans, Candida auris	1 %	10 mins
Virucidal (enveloped viruses). Incl. Vaccinia virus, HIV, Hepatitis B & C, Herpes Simplex, Coronavirus	1 %	10 mins
Fungicidal. Incl. Aspergillus brasiliensis	5 %	10 mins
Virucidal (non-enveloped viruses). Adenovirus	10 %	5 mins
Norovirus	10 %	30 mins

TRIGGER SPRAY

Directions for use: Refer to the Safety Data Sheet before use. Remove any visible dirt or soiling prior to disinfection. Direct spray nozzle to the surface, hold the trigger and apply product liberally to the surface. Leave for the required contact time before wiping away any excess solution. Leave to air dry.



WIPES

Directions for use: Refer to the Safety Data Sheet before use. Remove any visible dirt or soiling before disinfecting. Apply wipe to the surface in a "S" pattern, ensuring full coverage. Each wipe is suitable for disinfecting a surface area of 1m². Avoid wiping the same area twice and use a new wipe for each new surface to avoid cross-contamination. Leave surface to dry naturally. Reseal pack after use!



Please also refer to the Safety Data Sheets: starlab.click/disinfectant

WHICH FORMULA?

CONCENTRATE

Provides economical dilution rates for everyday cleaning and disinfection. Dilute to 1% for general disinfection or to 10% for high-risk and biohazard conditions. Available in two sizes, the 1 L self-dosing bottle has volume markers to help with consistent, correct dilution. A pump is available for the 5 L containers which delivers a 10 ml dose and reduces the risk of spills during dilution. An empty 1 L reusable spray bottle is also available for compliant storage of diluted disinfectant. Effective from 1 minute*.



1 L Empty Reusable, Spray Bottle for the compliant storage of diluted disinfectant. 1 L volume aids easy dilution from concentrate. Ergonomic trigger for comfortable use. Bottle made from 100% recycled HDPE.

READY TO USE SPRAY

Provides a reliable, pre-diluted formula (10%) for quick and convenient use in medical settings and high risk areas. Chemgene MEDLAB ready to use spray is a superior disinfectant for specialist use, which is effective in just 60 seconds*.

WIPES

For quick and convenient disinfection, Chemgene MEDLAB wipes have a plastic-free substrate that is thicker and more absorbent than other wipes for a better user experience. Ideal for removing dirt, germs and DNA from surfaces, each wipe dispenses enough (10%) disinfectant to cover 1 m² with rapid disinfection from 60 seconds*.

*See **Microbiological Efficacy** for more info on contact times.

EXCEPTIONAL MICROBIOLOGICAL ACTIVITY

Chemgene MEDLAB has been tested to the following European PT2 test standards.

Medical

- EN13727 & EN17387 (bactericidal)
- EN13624 & EN17387 (yeasticidal, fungicidal)
- EN16777 (virucidal – all enveloped viruses)
- EN16777 (Adenovirus, Norovirus)
- EN16615 (disinfectant wipe test)

Domestic

- EN14476 (virucidal – all enveloped viruses)
- EN14476 (Adenovirus, Norovirus)

Other

- EN13623 (Legionella)
- EN13610 (Bacteriophage)



Chemgene MEDLAB multi-surface disinfectants are compliant with regulations in the UK & EU including the Biocidal Products Regulation (BPR), Classification of Labelling and Packaging (CLP) and Registration, Evaluation, Authorisation and Restriction of Chemicals (REACH) regulations.

ADDITIONAL DATA

Test method	Test result
Preservative Efficacy Testing	Complies with the test for the Efficacy of Antimicrobial Preservatives (European Pharmacopoeia 11th Edition)
DNA/RNA Denaturation	Effective at denaturing DNA / RNA in 5 mins, at 1% dilution
Stain and odour testing	Effective at removing staining and odour from carpet tiles caused by common household agents including red wine, coffee, garden soil and synthetic cat vomit, at 20% dilution
Hard surface cleaning test	Effective at cleaning both synthetic cat vomit and blood stains from polyurethane substrate (substitute for hard flooring), at 2% dilution. Spray formula is proven to be compatible with dry wipes and microfibre clothes

MICROBIOLOGICAL EFFICACY

BACTERICIDAL EFFICACY

Test organisms	Test ref	Formula	Test conditions	Test result	
Acinetobacter baumannii	EN13727	Conc 1%	5 mins / low soil / 20 °C	>5 log reduction	
		RTU	1 min / high soil / 20 °C		
		Wipes	1 min / low soil / 20 °C		
	EN17387	Conc 1%	5 mins / low soil / 20 °C	>5 log reduction	
		RTU	1 min / high soil / 20 °C		
	Enterobacter cloacae	EN13727	Conc 1%	5 mins / low soil / 20 °C	>5 log reduction
RTU			1 min / high soil / 20 °C		
Wipes			1 min / low soil / 20 °C		
EN17387		Conc 1%	5 mins / low soil / 20 °C	>5 log reduction	
		RTU	1 min / high soil / 20 °C		
Enterococcus faecium		EN13727	Conc 1%	5 mins / low soil / 20 °C	>5 log reduction
	RTU		1 min / high soil / 20 °C		
	EN17387	Conc 1%	5 mins / low soil / 20 °C	>5 log reduction	
		RTU	1 min / high soil / 20 °C		
	Enterococcus hirae	EN13727	Conc 1%	5 mins / high soil / 20 °C	>5 log reduction
			RTU	1 min / high soil / 20 °C	
Wipes			1 min / low soil / 20 °C		
EN17387		Conc 1%	5 mins / low soil / 20 °C	>5 log reduction	
		Conc 2%	5 mins / high soil / 20 °C		
EN16615		RTU	1 min / high soil / 20 °C	>5 log reduction ¹⁾	
	Wipes	1 min / low soil / 20 °C			
Escherichia coli	EN13727	Conc 1%	5 mins / high soil / 20 °C	>5 log reduction	
		RTU	1 min / high soil / 20 °C		
		Wipes	1 min / low soil / 20 °C		
	EN17387	Conc 1%	5 mins / low soil / 20 °C	>5 log reduction	
		RTU	1 min / high soil / 20 °C		
	Klebsiella pneumoniae	EN13727	Conc 1%	5 mins / low soil / 20 °C	>5 log reduction
RTU			1 min / high soil / 20 °C		
Wipes			1 min / low soil / 20 °C		
EN17387		Conc 1%	5 mins / low soil / 20 °C	>5 log reduction	
		RTU	1 min / high soil / 20 °C		

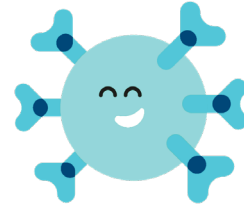
¹⁾ Modified Stainless Steel

BACTERICIDAL EFFICACY

Test organisms	Test ref	Formula	Test conditions	Test result
Legionella pneumophila	EN13623	Conc 1%	10 mins / low soil / 20 °C	>4 log reduction
		Conc 2%	5 mins / low soil / 20 °C	
		RTU & Wipes	1 min / 0.0005% yeast extract / 20 °C	
Methicillin-resistant Staphylococcus aureus (MRSA)	EN13727	Conc 1%	5 mins / low soil / 20 °C	>5 log reduction
		RTU	1 min / high soil / 20 °C	
	EN17387	Conc 1%	5 mins / low soil / 20 °C	>5 log reduction
		RTU	1 min / high soil / 20 °C	
Moraxella catarrhalis	EN13727	Conc 1%	5 mins / low soil / 20 °C	>5 log reduction
		RTU	1 min / high soil / 20 °C	
		Wipes	1 min / low soil / 20 °C	
	EN17387	Conc 1%	5 mins / low soil / 20 °C	>5 log reduction
		RTU	1 min / high soil / 20 °C	
		Wipes	1 min / low soil / 20 °C	
Pseudomonas aeruginosa	EN13727	Conc 1%	5 mins / low soil / 20 °C	>5 log reduction
		Conc 2%	5 mins / high soil / 20 °C	
		RTU	1 min / high soil / 20 °C	
	EN17387	Wipes	1 min / low soil / 20 °C	>5 log reduction
		Conc 1%	5 mins / low soil / 20 °C	
		Conc 2%	5 mins / high soil / 20 °C	
EN16615	RTU	1 min / high soil / 20 °C	>5 log reduction ¹⁾	
	Wipes	1 min / low soil / 20 °C		
	Conc 1%	5 mins / low soil / 20 °C		
Staphylococcus aureus	EN13727	RTU	1 min / high soil / 20 °C	>5 log reduction
		Wipes	1 min / low soil / 20 °C	
		Conc 1%	5 mins / high soil / 20 °C	
	EN17387	Conc 2%	5 mins / low soil / 20 °C	>5 log reduction
		Conc 1%	5 mins / high soil / 20 °C	
		RTU	1 min / high soil / 20 °C	
EN16615	RTU	5 mins / low soil / 20 °C	>5 log reduction ¹⁾	
	Wipes	1 min / low soil / 20 °C		
	Conc 1%	5 mins / low soil / 20 °C		
Streptococcus pyogenes	EN13737	RTU	1 min / high soil / 20 °C	>5 log reduction
		Wipes	1 min / low soil / 20 °C	
		Conc 1%	5 mins / low soil / 20 °C	
	EN17387	Conc 1%	5 mins / low soil / 20 °C	>5 log reduction
		RTU	1 min / high soil / 20 °C	
		Wipes	1 min / low soil / 20 °C	

¹⁾ Modified Stainless Steel

MICROBIOLOGICAL EFFICACY



VIRUCIDAL EFFICACY

Test organisms	Test ref	Formula	Test conditions	Test result
Vaccinia virus including Coronavirus, Hepatitis B, Hepatitis C, Herpes simplex, HIV	EN14476	Conc 1%	1 min / low soil / 20 °C	>4 log reduction
		Conc 2%	15 mins / high soil / 20 °C	
		RTU	1 min / high soil / 20 °C	
	EN16777	Wipes	1 min / low soil / 20 °C	
		Conc 1%	10 mins / low soil / 20 °C	
		Conc 2%	15 mins / high soil / 20 °C	
Adenovirus	EN14476	Conc 10% & RTU	5 mins / low soil / 20 °C	>4 log reduction
	EN16777	Conc 10% & RTU	5 mins / low soil / 20 °C	>4 log reduction
Norovirus	EN14476	Conc 5%	5 mins / low soil / 20 °C	>4 log reduction
		Conc 10% & RTU	2 mins / low soil / 20 °C	
		RTU	5 mins / high soil / 20 °C	
	EN16777	Conc 5%	45 mins / low soil / 20 °C	
		Conc 10% & RTU	30 mins / low soil / 20 °C	
	RTU	45 mins / high soil / 20 °C		

VIRUCIDAL EFFICACY AGAINST BACTERIOPHAGES

Test organisms	Test ref	Formula tested	Test conditions	Test result
Lactococcus lactis subsp. <i>lactis</i> P001 DSM 4262	EN13610	Conc & RTU	5 mins / 1% acidic whey / 0.5% / 20 °C	>4 log reduction
Lactococcus lactis subsp. <i>lactis</i> P008 DSM 10567	EN13610	RTU	5 mins / 1% acidic whey / 0.5%, 20 °C	>4 log reduction
Lactococcus lactis subsp. <i>lactis</i> P008 DSM 10567	EN13610	Conc	5 mins / 1% acidic whey / 1%, 20 °C	>4 log reduction

YEASTICIDAL/FUNGICIDAL EFFICACY

Test organisms	Test ref	Formula	Test conditions	Test result
Aspergillus brasiliensis	EN13624	Conc 5%	10 mins / low soil / 20 °C	>4 log reduction
		RTU	5 mins / high soil / 20 °C	
		Wipes	30 mins / low soil / 20 °C	
	EN17387	Conc 5%	10 mins / low soil / 20 °C	
		RTU	10 mins / low soil / 20 °C	
		RTU	30 mins / high soil / 20 °C	
Candida albicans	EN13624	Conc 1%	5 mins / high soil / 20 °C	>4 log reduction
		RTU	1 min / high soil / 20 °C	
		Wipes	1 min / low soil / 20 °C	
	EN17387	Conc 1%	10 mins / low soil / 20 °C	
		Conc 2%	5 mins / high soil / 20 °C	
		RTU	2 mins / high soil / 20 °C	
EN16615	RTU	5 mins / low soil / 20 °C	>4 log reduction ¹⁾	
	Wipes	1 min / low soil / 20 °C		
	Conc 2%	5 mins / low soil / 20 °C		
Candida auris	EN13624	RTU	1 min / high soil / 20 °C	>4 log reduction
		Wipes	1 min / low soil / 20 °C	
	EN17387	Conc 1%	10 mins / low soil / 20 °C	
		Conc 2%	5 mins / low soil / 20 °C	
		RTU	2 mins / high soil / 20 °C	